

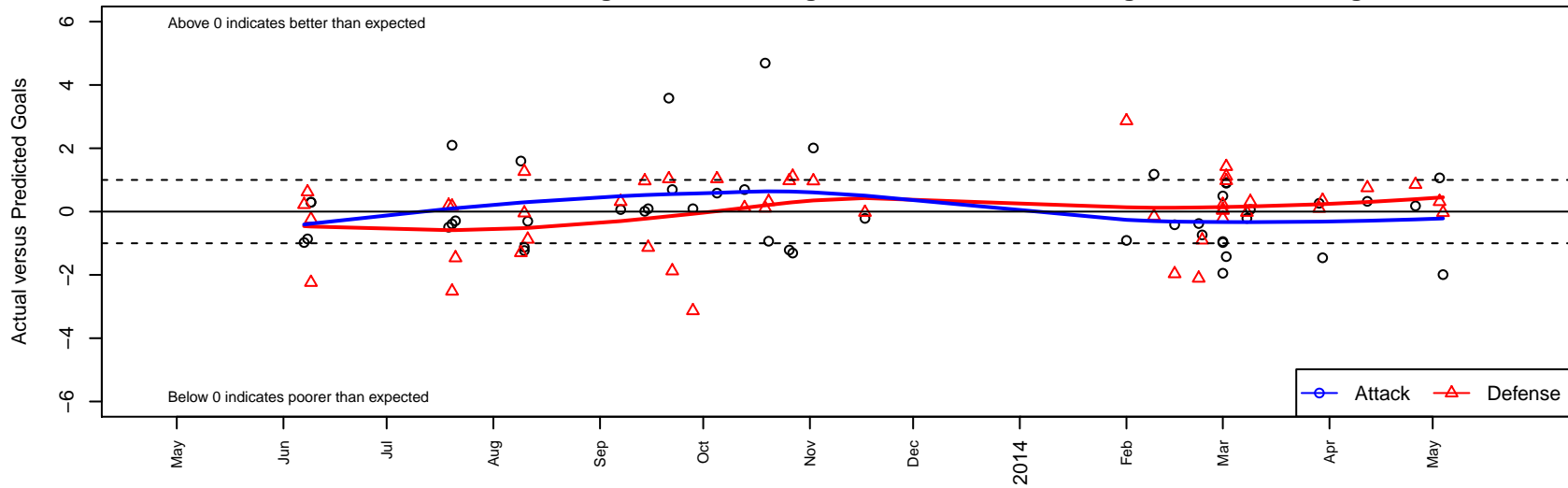
Three Rivers SC Black G01

Three Rivers SC
 Pasco, WA
 G01 total strength=712
 attack=0.78 defense=0.7
 fall league = RCL G01 Div 3, Spr RCL G01 Div
 notes= Frisbee 2013
 alt names used:
 Three Rivers SC Black G01
 3RSC G01 Black
 3 Rivers SC 01 Frisbee

Venues played:
 Sagebush Classic Girls U12 U12
 Beaverton Cup GU12 Silver
 Les Schwab NW Cup Girls U12 Premier U12
 RCL G01 Div 3
 Spr RCL G01 Div 3
 Blue Mtn Exchange Group A U12
 Challenge Cup G01 Division 2 – Challenge 2



Three Rivers SC Black G01
 Dots are actual minus expected GF (blue circles) and GA (red triangles).
 Blue line is smoothed change in attack strength. Red is smoothed change in defense strength.



| | date | home | | away | | venue | pred.home | pred.av |
|---|------------|--------------------------------|---|--------------------------------------|---|--|-----------|---------|
| 3 | 2014-05-04 | Three Rivers SC Black G01 | 0 | Highline Premier Blue G01 | 1 | Challenge Cup G01 Division 2 – Challenge 2 | 1.99 | 0.97 |
| f | 2014-05-03 | Three Rivers SC Black G01 | 2 | Harbor Premier White G01 | 1 | Challenge Cup G01 Division 2 – Challenge 2 | 0.94 | 1.31 |
| 7 | 2014-04-26 | Three Rivers SC Black G01 | 3 | SSC Shadow B G01 | 0 | Challenge Cup G01 Division 2 – Challenge 2 | 2.82 | 0.86 |
| f | 2014-04-12 | Three Rivers SC Black G01 | 1 | Seattle United Nova G01 | 0 | Challenge Cup G01 Division 2 – Challenge 2 | 0.68 | 0.75 |
| f | 2014-03-30 | Blackhills FC Black G01 | 0 | Three Rivers SC Black G01 | 2 | Challenge Cup G01 Division 2 – Challenge 2 | 0.35 | 3.46 |
| 7 | 2014-03-29 | Crossfire Premier C G01 | 1 | Three Rivers SC Black G01 | 2 | Challenge Cup G01 Division 2 – Challenge 2 | 1.10 | 1.74 |
| 7 | 2014-03-09 | Three Rivers SC Black G01 | 1 | Harbor Premier White G01 | 1 | Spr RCL G01 Div 3 | 0.94 | 1.31 |
| 3 | 2014-03-08 | Three Rivers SC Black G01 | 1 | FWFC Blue G01 | 1 | Spr RCL G01 Div 3 | 1.21 | 0.97 |
| 3 | 2014-03-02 | Three Rivers SC Black G01 | 3 | SSC Shadow Elite Rennaker-Cooper G01 | 0 | Blue Mtn Exchange Group A U12 | 2.10 | 1.11 |
| 5 | 2014-03-02 | SSC Shadow United Benjamin G01 | 0 | Three Rivers SC Black G01 | 3 | Blue Mtn Exchange Group A U12 | 0.98 | 2.08 |
| 7 | 2014-03-02 | Three Rivers SC Black G01 | 0 | Three Rivers SC Black G01 | 0 | Blue Mtn Exchange Group A U12 | 1.42 | 1.42 |
| 7 | 2014-03-01 | Three Rivers SC Black G01 | 0 | FC Nova Grey G01 | 1 | Blue Mtn Exchange Group A U12 | 1.95 | 1.04 |
| 2 | 2014-03-01 | Three Rivers SC Black G01 | 2 | PCU Red G01 | 1 | Blue Mtn Exchange Group A U12 | 1.51 | 1.07 |
| 5 | 2014-03-01 | Three Rivers SC Black G01 | 2 | Breakers Andersson G01 | 1 | Blue Mtn Exchange Group A U12 | 2.95 | 0.79 |
| 3 | 2014-03-01 | Three Rivers SC Black G01 | 6 | Three Rivers SC Green G01 | 0 | Blue Mtn Exchange Group A U12 | 6.98 | 0.22 |
| 3 | 2014-02-23 | Crossfire Premier C G01 | 2 | Three Rivers SC Black G01 | 1 | Spr RCL G01 Div 3 | 1.10 | 1.74 |
| 7 | 2014-02-22 | Eastside FC White G01 | 3 | Three Rivers SC Black G01 | 1 | Spr RCL G01 Div 3 | 0.89 | 1.38 |
| 3 | 2014-02-15 | Three Rivers SC Black G01 | 1 | Westsound FC Red G01 | 3 | Spr RCL G01 Div 3 | 1.42 | 1.03 |
| 7 | 2014-02-09 | Three Rivers SC Black G01 | 4 | SSC Shadow B G01 | 1 | Spr RCL G01 Div 3 | 2.82 | 0.86 |
| 5 | 2014-02-01 | Whatcom FC Rangers Gold G01 | 0 | Three Rivers SC Black G01 | 0 | Spr RCL G01 Div 3 | 2.87 | 0.91 |
| 7 | 2013-11-17 | Three Rivers SC Black G01 | 1 | FWFC Blue G01 | 1 | RCL G01 Div 3 | 1.21 | 0.97 |
| 2 | 2013-11-02 | Three Rivers SC Black G01 | 4 | Highline Premier Blue G01 | 0 | RCL G01 Div 3 | 1.99 | 0.97 |
| 7 | 2013-10-27 | WA Rush Nero G01 | 0 | Three Rivers SC Black G01 | 0 | RCL G01 Div 3 | 1.11 | 1.31 |
| 3 | 2013-10-26 | FWFC Blue G01 | 0 | Three Rivers SC Black G01 | 0 | RCL G01 Div 3 | 0.97 | 1.21 |
| 7 | 2013-10-20 | Three Rivers SC Black G01 | 0 | Harbor Premier White G01 | 1 | RCL G01 Div 3 | 0.94 | 1.31 |
| 2 | 2013-10-19 | Three Rivers SC Black G01 | 6 | WA Rush Nero G01 | 1 | RCL G01 Div 3 | 1.31 | 1.11 |
| 3 | 2013-10-13 | Three Rivers SC Black G01 | 1 | SSC Shadow A G01 | 4 | RCL G01 Div 3 | 0.30 | 4.12 |
| 2 | 2013-10-05 | Westsound FC Red G01 | 0 | Three Rivers SC Black G01 | 2 | RCL G01 Div 3 | 1.03 | 1.42 |

| | date | home | | away | | venue | pred.home | pred.away |
|------|-------------|-----------------------------|---|------------------------------|---|---|------------------|------------------|
| 5572 | 2013-09-28 | Whatcom FC Rangers Gold G01 | 6 | Three Rivers SC Black G01 | 1 | RCL G01 Div 3 | 2.87 | 0.91 |
| 5474 | 2013-09-22 | SSC Shadow A G01 | 6 | Three Rivers SC Black G01 | 1 | RCL G01 Div 3 | 4.12 | 0.30 |
| 5427 | 2013-09-21 | Three Rivers SC Black G01 | 5 | Westsound FC Red G01 | 0 | RCL G01 Div 3 | 1.42 | 1.03 |
| 5318 | 2013-09-15 | Three Rivers SC Black G01 | 1 | Whatcom FC Rangers Gold G01 | 4 | RCL G01 Div 3 | 0.91 | 2.87 |
| 5264 | 2013-09-14 | Highline Premier Blue G01 | 0 | Three Rivers SC Black G01 | 2 | RCL G01 Div 3 | 0.97 | 1.99 |
| 5119 | 2013-09-07 | Harbor Premier White G01 | 1 | Three Rivers SC Black G01 | 1 | RCL G01 Div 3 | 1.31 | 0.94 |
| 4673 | 2013-08-11 | SSC Shadow A G01 | 5 | Three Rivers SC Black G01 | 0 | Les Schwab NW Cup Girls U12 Premier U12 | 4.12 | 0.30 |
| 4631 | 2013-08-10 | CDA Sting White Caps G01 | 1 | Three Rivers SC Black G01 | 0 | Les Schwab NW Cup Girls U12 Premier U12 | 2.27 | 1.23 |
| 4634 | 2013-08-10 | XiFA G2020 G01 | 3 | Three Rivers SC Black G01 | 0 | Les Schwab NW Cup Girls U12 Premier U12 | 2.96 | 1.12 |
| 4599 | 2013-08-09 | Spokane Foxes Red G01 | 4 | Three Rivers SC Black G01 | 2 | Les Schwab NW Cup Girls U12 Premier U12 | 2.70 | 0.40 |
| 4289 | 2013-07-21 | Washington Timbers Lime G01 | 3 | Three Rivers SC Black G01 | 1 | Beaverton Cup GU12 Silver | 1.54 | 1.29 |
| 4228 | 2013-07-20 | THSSP Blue Thorns G01 | 0 | Three Rivers SC Black G01 | 7 | Beaverton Cup GU12 Silver | 0.17 | 4.90 |
| 4235 | 2013-07-20 | Three Rivers SC Black G01 | 2 | Capital FC Timbers White G01 | 3 | Beaverton Cup GU12 Silver | 2.39 | 0.48 |
| 4204 | 2013-07-19 | Three Rivers SC Black G01 | 5 | PCU Black G01 | 0 | Beaverton Cup GU12 Silver | 5.49 | 0.20 |
| 3874 | 2013-06-09 | Spokane Foxes Platinum G01 | 5 | Three Rivers SC Black G01 | 1 | Sagebush Classic Girls U12 U12 | 2.76 | 0.70 |
| 3876 | 2013-06-09 | Spokane Foxes Platinum G01 | 3 | Three Rivers SC Black G01 | 1 | Sagebush Classic Girls U12 U12 | 2.76 | 0.70 |
| 3857 | 2013-06-08 | Three Rivers SC Black G01 | 1 | CWSA Navy G01 | 1 | Sagebush Classic Girls U12 U12 | 1.86 | 1.62 |
| 3841 | 2013-06-07 | Three Rivers SC Black G01 | 6 | Three Rivers SC Green G01 | 0 | Sagebush Classic Girls U12 U12 | 6.98 | 0.22 |